



## FIRE RATED ROLLING SHUTTERS



**GANDHI**  
Automations Pvt Ltd

India's **No.1** Entrance Automation & Loading Bay Equipment Company

# EUROPEAN COLLABORATION AND TECHNOLOGY WITH INNOVATIVE AND CREATIVE ENGINEERING FOR MORE THAN 25 YEARS



## Quality & Safety - Our Priority

Fire Rolling Shutters are tested and approved by Exova Warrington UK in accordance with BS 476: Part 22: 1987 certified or UL / FM Certified.



Gandhi Automations design, develop, manufacture and execute its products strictly in accordance with the above mentioned EN standards.

You are assured with our best quality products, safe operation and after sales service 24/7.

A PARTNER WHO STANDS BY YOUR SIDE

**10  
YEARS**

**GUARANTEED  
AVAILABILITY**

**CRISIL**

An S&P Global Company

**Ratings**



## ORIGINAL SPARE PARTS

Guaranteed original spare parts availability for 10 years



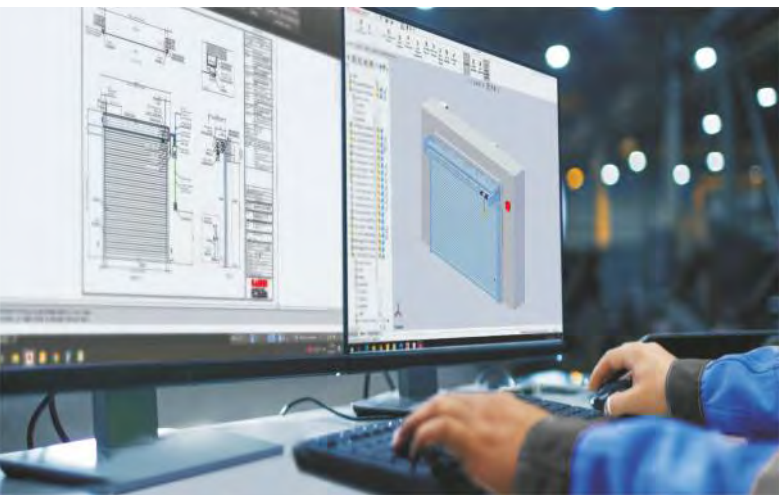


## CONTENTS

- 4 | Our Quality For Your Safety
- 6 | Fire Rated Rolling Shutters -  
Fire Warrior, BS certified
- 9 | Fire Shutter Test



# Our Quality For Your Safety



Gandhi Automations Pvt Ltd is India's No.1 Entrance Automation & Loading Bay Equipment Company. Since 1996, we have been designing, manufacturing, exporting and installing products that are hassle-free, safe and easy to operate. Gandhi Automations Pvt Ltd is a globally well-renowned brand, which is a result of years of hard work, innovation, commitment to quality & reliable customer service. We are a Government of India recognised 'Star Export House'.

Our comprehensive product portfolio consists of :  
High Speed Industrial Doors, Dock Levelers & Dock Shelters, Rolling Shutters, Sectional Overhead Doors, Aircraft Hangar Doors & Shipyard Doors, Gates & Boom Barriers.

## Head Office

Headquartered in Mumbai, the commercial capital of India, our company has expanded its manufacturing capacity, operations, geographical reach and customer base globally. Today our products are marketed by us and our distributors in more than 70 countries across the globe.

## Competent Advice

Proper customer guidance and service are our top priorities. Our well trained and experienced specialists are always at your disposal from the project planning stage to final stages of handover, inspection as well as training. They help you choose a perfect product solution tailored to meet your requirements.



## Quality Management

The company caters to following certifications : ISO 9001:2015, ISO 14001:2015 and ISO 45001:2018 by TÜV Austria. This has resulted in implementing continuous improvement towards personnel training, production, equipment calibration, machinery maintenance, logistics and customer relations.

## Our global presence so far

United Arab Emirates		Israel		Cameroon		Philippines	
Saudi Arabia		Iran		Ghana		Rwanda	
Kuwait		Egypt		Indonesia		Senegal	
Bahrain		Angola		Malaysia		Singapore	
Qatar		Australia		New Zealand		Tanzania	
Oman		Bangladesh		Nigeria		Thailand	
Jordan		Brazil		Peru		Vietnam	



Our product engineering team uses latest software applications combined with advanced machinery to offer our customers an excellently engineered, efficient and finished product.

### Installation, Commissioning & Service

Our team of committed and diligent engineers and technicians are at your service round the clock; many of whom are trained at advanced training centers in Europe so as to ensure perfect installation and trouble-free commissioning according to the specifications. Thus, always assuring product reliability and longevity.

### Advance Manufacturing

Our strategically located state of the art manufacturing and warehousing facility of 5,00,000 sq. ft. near Bhiwandi (40km NE of Mumbai) ensures high-quality product output and short delivery time.

The constant innovation and creative engineering applications of Gandhi Automations is a result of extensive and accurate in-house research and development.

All essential product components & accessories as well as control technology units are designed in-house and produced using European collaboration and technology.



### Packaging & Dispatch Area

Special care and all necessary precautions are taken while packaging the products for dispatch. Each consignment is supervised by a team of experts who ensure that material is dispatched safely, efficiently and promptly.

Uganda		Seychelles		Kenya		Chile	
United Kingdom		Sierra Leone		Lebanon		Cote D'Ivoire	
Germany		South Africa		Madagascar		Cyprus	
Mauritius		Sudan		Maldives		Ethiopia	
Sri Lanka		Taiwan		Mexico		Fiji	
Turkey		Tanzania		Papua New Guinea		Iraq	
Italy		Togo		Russia		Japan	



# Fire Rated Rolling Shutters - Fire Warrior

BS certified





Fire Rated Rolling Shutters are rated physical fire barriers that protect wall openings from the spread of fire and are designed to close automatically in the event of fire or an alarmed event. Automatic closure will be thermally controlled by means of fusible link.

Motorised Fire Rated Rolling Shutter is tested & approved by Exova Warrington UK which comply with BS 476: Part 22: 1987 standards for stability and integrity for up to 4 hours.

Application includes industrial, commercial, institutional and retail projects where fire protection is required.

---

### **Curtain**

Fire Warrior curtain is constructed from 79 mm cold rolled Galvalume / Galvanised Steel / Stainless Steel laths with a minimum thickness of 0.9 mm. The interlocked profiles are securely held using specially designed profile ends which act as a curtain alignment system thus eliminating lateral movement of the profiles.

### **Side Guides**

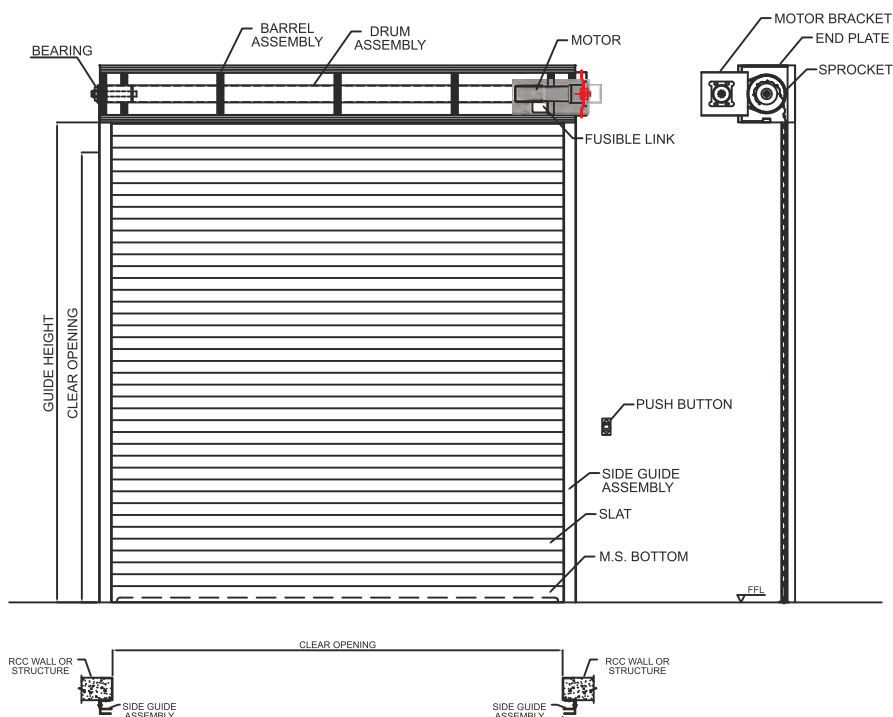
Mild Steel angles of suitable size and thickness are bolted with support angles to support the guides to form a secure fix in the RCC / Steel structure.

### **Bottom Rail**

Formed from Mild Steel flat bar and angle depending on door width, welded back through a centrally located Galvanised Steel flat plate.

### **Barrel Assembly**

The roller barrel is manufactured from Mild Steel tube of suitable outside diameter and wall thickness to suit the shutter application and is un-sprung.



## Barrel Bracket Plate

Suitable design of thickness 4mm. Fitted with suitable anchor fasteners for fixing to the RCC / steel structure.

## Hood

0.9mm thick pressed Galvalume / Galvanised Steel hood box complete with reinforced bracket as required to suit the shutter width.

## Shutter Operation

Electrically operated: Shutters are fitted with a geared motor complete with a push button station with "UP", "DOWN" and "STOP" buttons.

## Auto - Closing Mechanism

All Fire Shutters are equipped with fusible link mechanism. Upon sensing a temperature of 74°C, the fusible link mechanism releases the brake of the motor and allows it to descend by gravity. Where Fire Shutters are needed to be activated by fire alarm signal, a dual fusible link (electric solenoid releaser) is used which releases the brake of the motor, upon receipt of a 24VDC, 400mA fire alarm signal. A reset pull is provided to reapply the brake on the motor.

## Accessories

- Auto reset solenoid with fusible link
- Polyurethane painted in RAL Colours
- Audio visual fire control panels which can be connected to photo beams, smoke and heat detectors. Allowing full control over how the shutter will descent in fire condition

## Technical Details of Operator

Description		GAPL FRS1P-600	GAPL FRS1P-1000	GAPL FRS3P-1500	GAPL FRS3P-2000
Rated output torque	Nm	412	809	1617	2450
Rated output speed	r/min	4.8	3.5	5.2	3.6
Motor power	W	370	400	1000	1000
Rated votage	V/Hz	230/50	230/50	415/50	415/50
Rated current	A	3.3	4.9	3.8	4.1
Continuous working time	Min	8	8	13	13
Maximum lifting	kg	600	1000	1500	2000



# Fire Shutter Test



Before the test



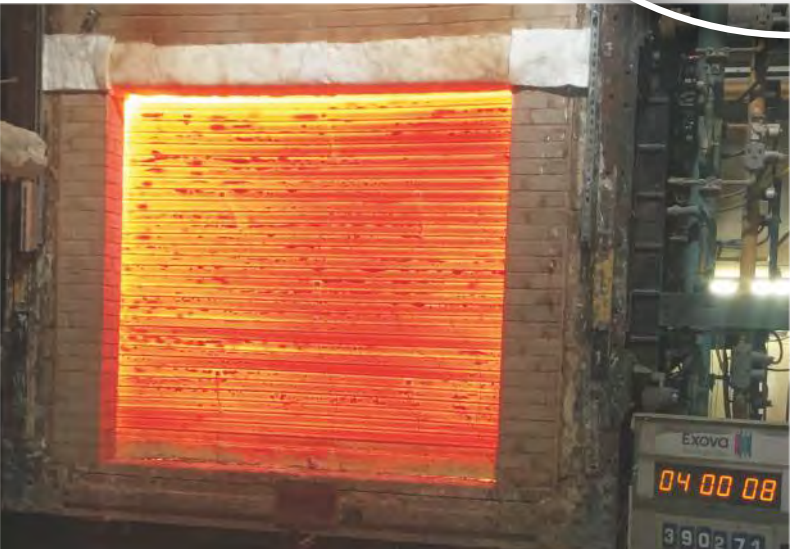
60 minutes of test



120 minutes of test



180 minutes of test



240 minutes of test



270 minutes of test - end of test



**STAR EXPORT HOUSE**  
(Government of India Recognised)



Gandhi Automations operates a policy of continuous development and reserves the right to make technical modifications / replacements without prior notice.

**GANDHI**  
Automations Pvt Ltd

**India's No.1 Entrance Automation & Loading Bay Equipment Company**

**INDIA:**

Gandhi Automations Pvt Ltd, Chawda Commercial Centre, Link Road, Malad (W), Mumbai-400064, India  
Tel: +91 22 6672 0200 / 6672 0300 (200 Lines)

**UAE:**

Gandhi Automation FZE, Jafza One Building No.1 - AB1204, Jebel Ali Free Zone, Dubai, UAE  
Tel: +971 50 915 3560

**Email:** [export@geapl.com](mailto:export@geapl.com) | **Website:** [www.geapl.com](http://www.geapl.com)