



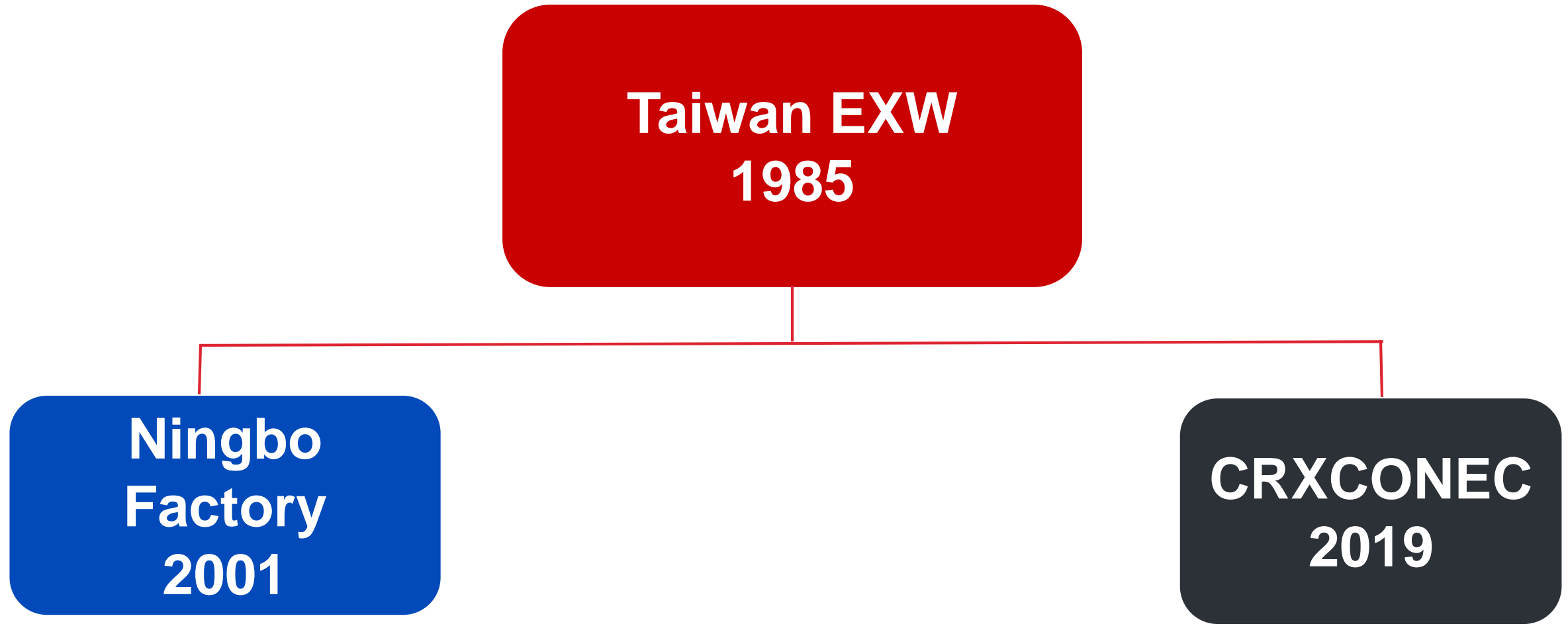
CRXCONEC

 <http://www.crxconec.com>



Company Overview-OUR GROUP

Based in Taiwan with 35 years' OEM& ODM experience



OUR Group

- Copper /fiber Cabling Products
- Modular Plug
- Gold Plated Contact Blades

Established Taiwan
EXW
1985

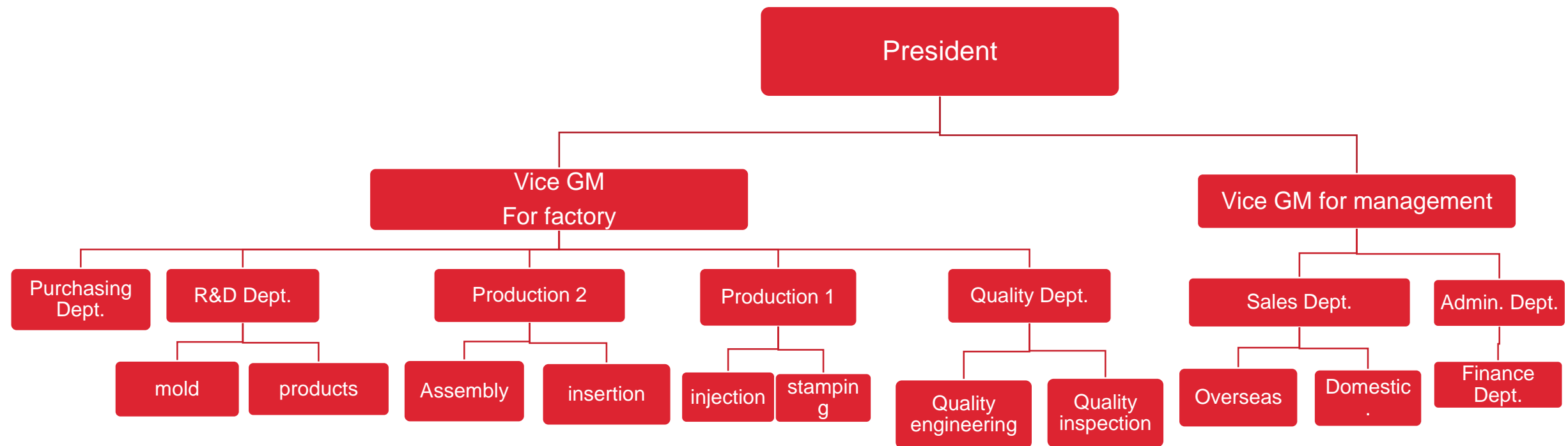
Established Ningbo
EXW
2001

- Copper/ Fiber Cabling Products
- Modular Plug
- Gold Plated Wire
- Gold Plated Contact Blades
- Patch Cord

Established
CRXCONEC
2019

- Total Cabling Solution

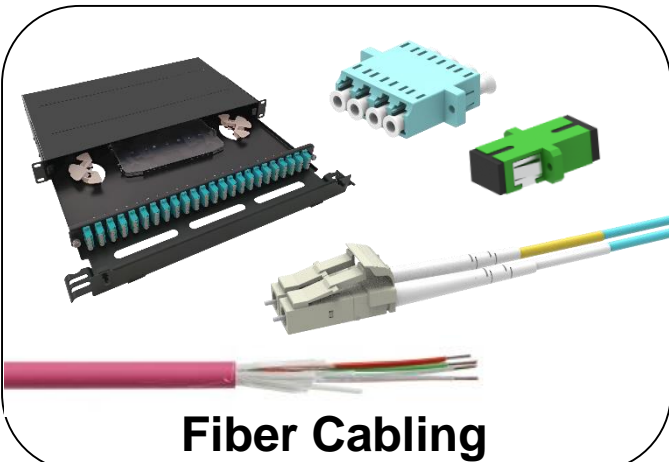
FACTORY ORGANIZATION CHART



Product Overview

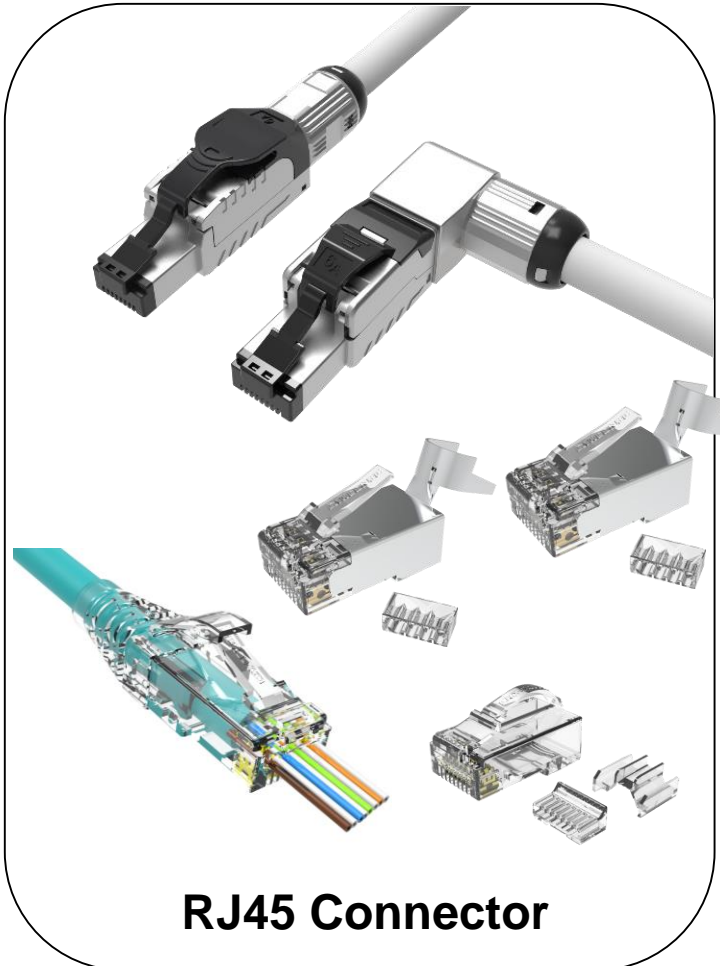
Based in Taiwan with 35 years' OEM& ODM experience

Ningbo Factory



Fiber Cabling

Taiwan factory

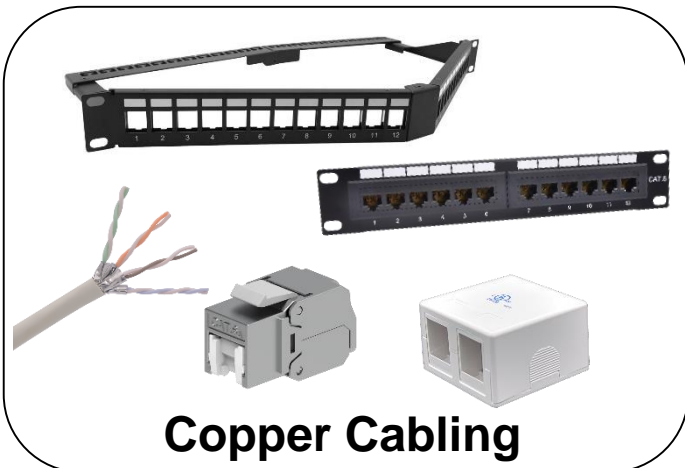


RJ45 Connector

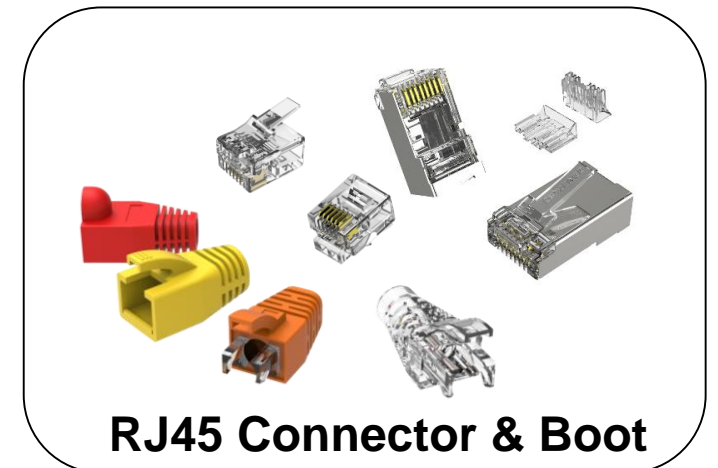
Ningbo factory



Copper Patch Cord



Copper Cabling



RJ45 Connector & Boot

Major Workshops

Based in Taiwan with 35 years' OEM& ODM experience

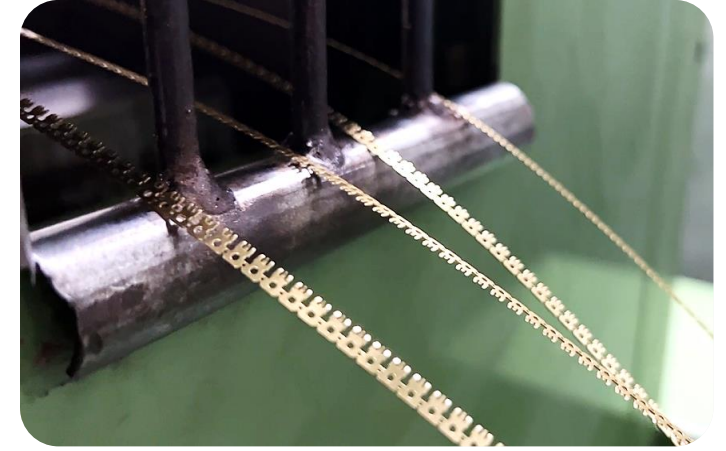
- Stamping
- Gold Plating
- Injection
- Insertion
- Painting
- Assembly
- Packing
- Quality Control



Stamping

Based in Taiwan with 35 years' OEM& ODM experience

The stamping machines takes a piece of phosphor bronze and transforms it into 4 strings of contacts pins and rolls them into a spool.



Stamping Machine: 5

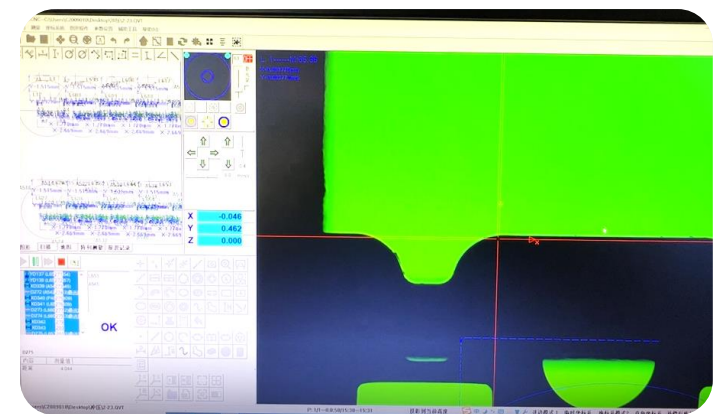
Capacity: 700M PCs/ Month

Auto Vision Measuring Machine: 1

- 93% Efficiency Improvement

30 MIN->2 MIN

- Precise Measurement



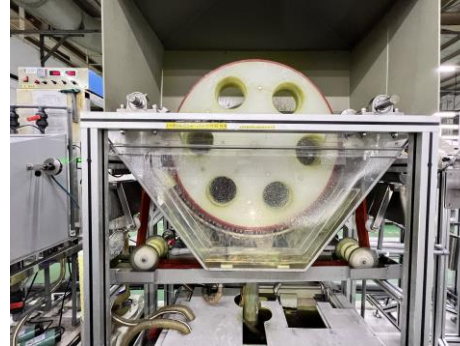
Gold Plating

Based in Taiwan with 35 years' OEM& ODM experience

Mainly responsible for the plating of gold wires and contact blades, providing 50U"~3U" to customers. Focusing on regular inspection and maintenance of machinery, raw material management, and in-plant wastewater collection system.

Gold Plating Machine: 3

Capacity: 300M PCs/ Month



Pre-plating treatment

Nickel Plating

Gold Plating

Drying

Round-Up

Injection

Based in Taiwan with 35 years' OEM& ODM experience

The injection of plastic products and parts, including the RJ45 connector, faceplate, keystone jack housing and so on. With automated gripper and counting devices, it can reduce manpower and improve accuracy. We have more than 30 injection machines that work 2 shifts a day.

Injection Machine: 30+

Capacity: 4.5M PCs/ Month



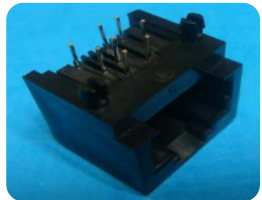
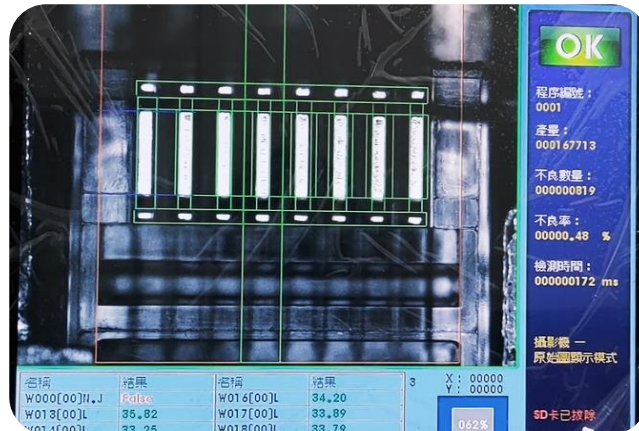
Auto Press-Fit

Based in Taiwan with 35 years' OEM& ODM experience

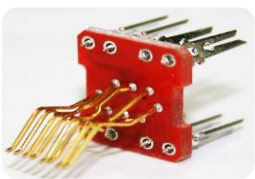
Automated production line with smart tracking system, AOI (automated optical inspection), presents a higher level of quality control and production capacity to keystone jack, panel, and modular plugs and so on.

Insertion Machine: 26+

Capacity: 3M PCs/ Month



PCB Jack



KJ PCB module



IDC



Assembly

Based in Taiwan with 35 years' OEM& ODM experience

Our skilled assembly team will assemble the semi-product to a finished product. Every production line has a bulletin to check the detailed production requirement for different customers.

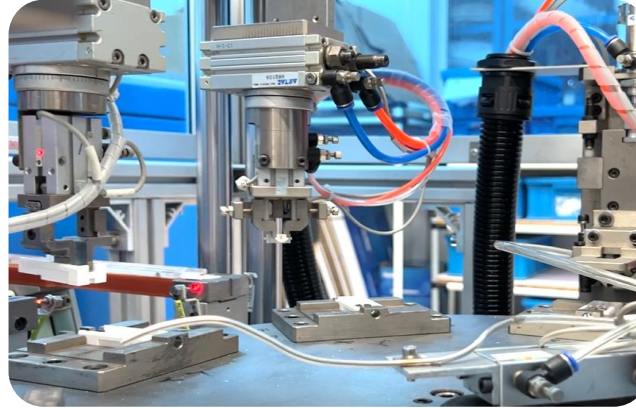
Capacity:

Copper Patch Cord: 1.2M PCs/ Month

Fiber Patch cord: 200K PCs/ Month

Keystone Jack: 3M PCs/ Month

Patch Panel: 110K PCs/ Month



Packing

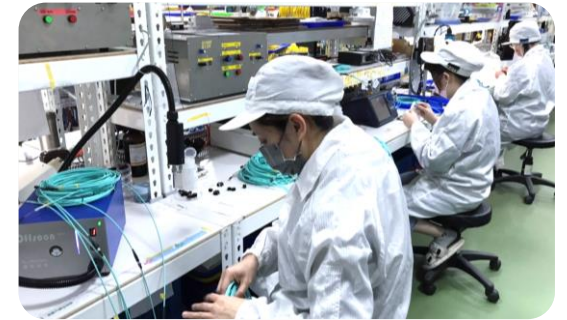
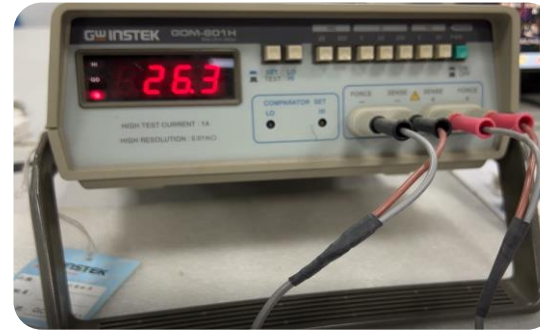
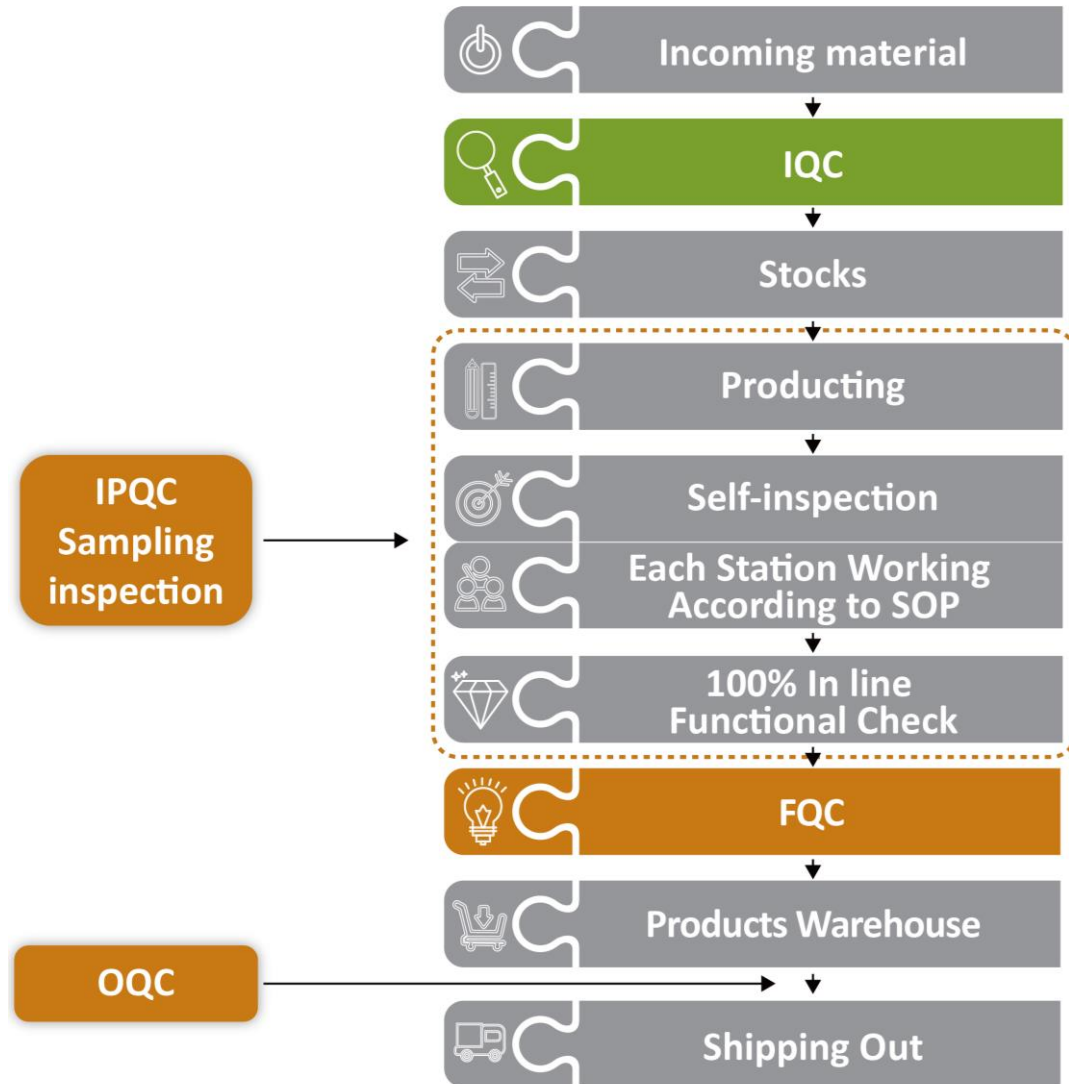
Based in Taiwan with 35 years' OEM& ODM experience

The semi-automation packing machine according to customers' requirements like putting labels on the outer package, or put individual test reports into the package.



Quality Control

Based in Taiwan with 35 years' OEM& ODM experience



Quality Control

Based in Taiwan with 35 years' OEM& ODM experience

Each fiber patch cord must be strictly tested before leaving the factory. So what tests will a fiber patch cord manufacturer do to ensure the high quality of patch cords?

- End face inspection
- Insertion loss/return loss detection
- 3D interferometer inspection



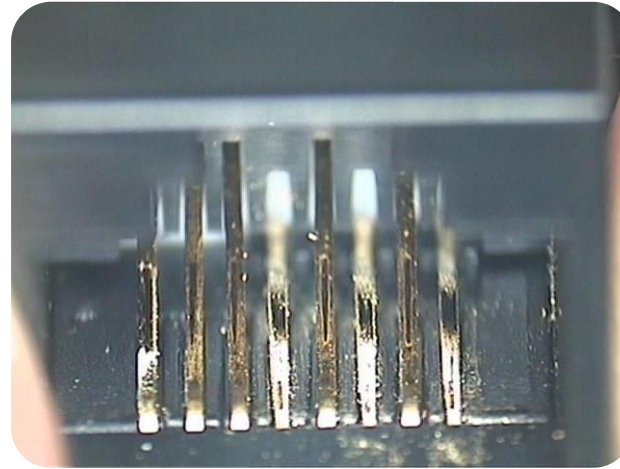
Quality Control

Based in Taiwan with 35 years' OEM& ODM experience

The cabling component pass the IEC60603-7 standard to guarantee the product quality and also the reliability of cabling products.

IEC60603-7

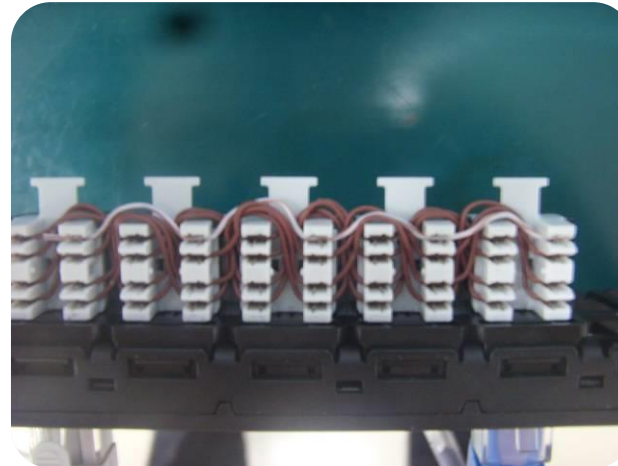
- Insertion Test
- Contact Resistance
- Insulation Resistance
- Retention Strength
- Thermal shock



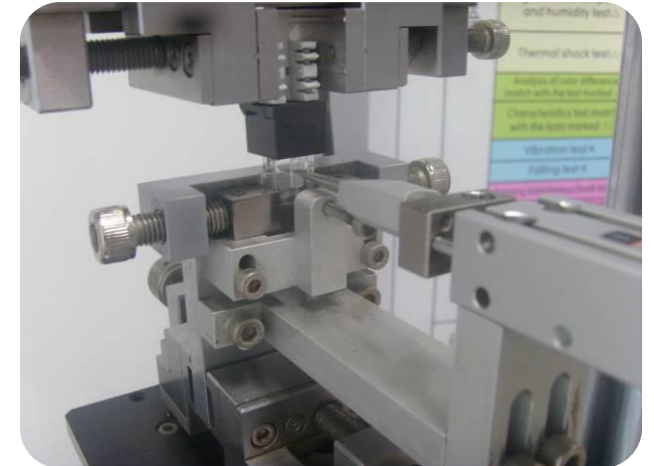
Insertion Test



Thermal shock



Instant Break Test



Retention Strength

Smart Factory

Based in Taiwan with 35 years' OEM& ODM experience

We introduced I-Tec MES system in every production line, prompt production data updating to the main BI Board.

The Smart BI Board is composed of 14 charts to trace the business information and the production line capacity.

Based on the intelligent data acquisition, our administrative department take it as an essential tool to solve problems in production line.



Based in Taiwan with 35 years' OEM& ODM experience



Thank You

Connect You To The World



CRXCONEC



<http://www.crxconec.com>